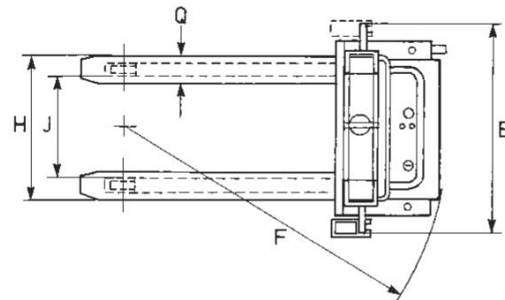
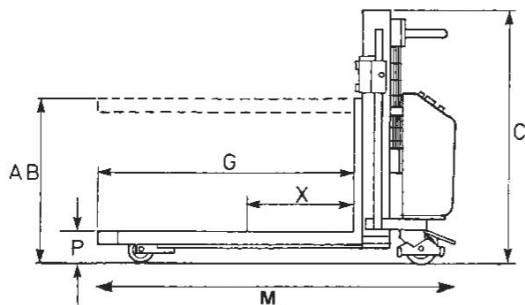


Machine Type			Standard With Wrapover Forks			Wide Straddle With Fixed Forks		
Capacity Kg	AB Raised Height	Operation	Reference	Lift Speed	Weight KG	Reference	Lift Speed	Weight Kg
700	820	Electric	SL-700-820-E	6 secs/metre	219	SL-700-820-E-ADJ	6 secs/metre	203
1000	820	Electric	SL-1000-820-E	6 secs/metre	270	SL-1000-820-E-ADJ	6 secs/metre	280
Load Centre		X	500			500		
Free Lift		-	820			820		
Closed Fork Height		P	90			90		
O/A H x W x L mm		C x E x M	1220 x 760 x 1620			1220 x 1550 x 1620		
Fork Length		G	1140			1140		
Width Across Forks		L	528			528		
Fork W x D		Q	160 x 50			100 x 50		
Width Between Legs		J/H	Inside 260 / Outside 480			Inside 1300 / Outside 1520		
Castor Wheels		-	150mm dia, 2 Braked			150mm dia, 2 Braked		
Load Roller Dia x L mm		-	80 x 75			80 x 75		

Optional Extras

- 3 Phase mains electric operation
- Static Model (Fig.1)
- Special fork length & straddle widths, Available on request, please ask for details (Fig.2)
- Optional 200mm dia wheels on wide straddle model



All dimensions are in mm unless otherwise shown